

FOCUS

Annual Report & Financial Statements

For the year ended
31 December **2007**

FOCUS Charity

Charity Number 1068467

Company Number 3491993

(A Company Limited by Guarantee and not having a share capital)

Contents

	Page
1. Trustees' (Directors' Report)	3
2. Our Vision, Mission, Aims and Values	4
3. Organisational Structure	5
4. Company Secretary and Principal Officer	5
5. Registered Company and Charity Information	6
6. Trustees (Directors) and their Interests	6
7. Recruitment, Selection and Induction of New Trustees (Directors)	6
8. Statement of Trustees' Responsibilities	7
9. The Value of Volunteering	7
10. Fundraising Strategy and Performance	7
11. Review of Activities	8
12. Our Future Plans and Strategy	12
13. Risk Assessment	13
14. Reserves	13
15. Auditors and Principal Bankers	13
16. Independent Auditors' Report to the Members	14
17. Statement of Financial Activities	15
18. Balance Sheet	17
19. Notes to the Financial Statements	18

1. Trustees' (Directors') Report

The Trustees present their report and audited financial statements for the year ending on the 31st December 2007.

The report and financial statements have been prepared in accordance with the Memorandum and Articles of Association and the recommendations of the Statement of Recommended Practice (SORP) 'Accounting and Reporting by Charities' 2005 and comply with applicable law.

On 13th January 1998 FOCUS Charity was incorporated under the Companies Act as a private limited company (company number 3491993), governed by a Memorandum and Articles of Association and on the 5th March 1998 was registered as a charity (registered number 1068467). On the 1st July 1998 the new company absorbed the assets, liabilities and activities of FOCUS, the previous charitable trust, whose net funds amounted to £83,869.

On 1st October 1993 FOCUS had been constituted under a Trust Deed and registered as a charity (registered number 1028637). As of that date the Trust absorbed the assets, liabilities and activities of the Bridge Programme whose net funds amounted to £65,900.

Please note

Further copies of our Annual Report and Financial Statements 2007, and other documents relating to FOCUS, including a full-colour Annual Review 2007, can be downloaded from our website:

www.focus-charity.co.uk

or obtained from our office:

FOCUS, 73 Churchgate, Leicester, LE1 3AN. Tel: 0116 251 0369

2. Our Vision, Mission, Aims and Values

Our Vision...

Is of a society in which individuals feel inspired and empowered to have a positive impact in their communities.

Our Mission...

Is to bring together people who wouldn't usually meet to do things they wouldn't usually do.

Our Aims...

- To provide opportunities for growth, learning and development that are fun and inspiring.
- To support the development of self-awareness, self-confidence, self-belief and self-esteem for all of our programme participants, volunteers and staff.
- To enable individuals to develop skills that are relevant to them such as communication, negotiation, task-management, problem-solving and teamworking.
- To facilitate improved relationships between individuals and groups.
- To foster a positive appreciation of the uniqueness of individuals, their beliefs, backgrounds, abilities and experiences.
- To develop an improved understanding of communities, their value and individuals' importance to them.

Our Core Values...

As an organisation, we hold a set of values that underpin everything we do. These are:

- *Passion* – we hold a passionate belief in the potential that exists within all people and that our efforts can help to realise it
- *Hard work* – we will strive to offer the best possible service to all people
- *Creativity* – we will always look to improve on and develop what we do
- *Risk-taking* – we will take calculated risks in our work, if the benefits justify
- *Young people centred* – we will consider the needs and wants of young people in everything we do and we will champion their cause
- *Quality* – we will take due care to ensure that our work has a positive effect on all those people with whom we work
- *Respect* – we will always take care to consider the individuality of the people with whom we work and to be inclusive and accepting of them

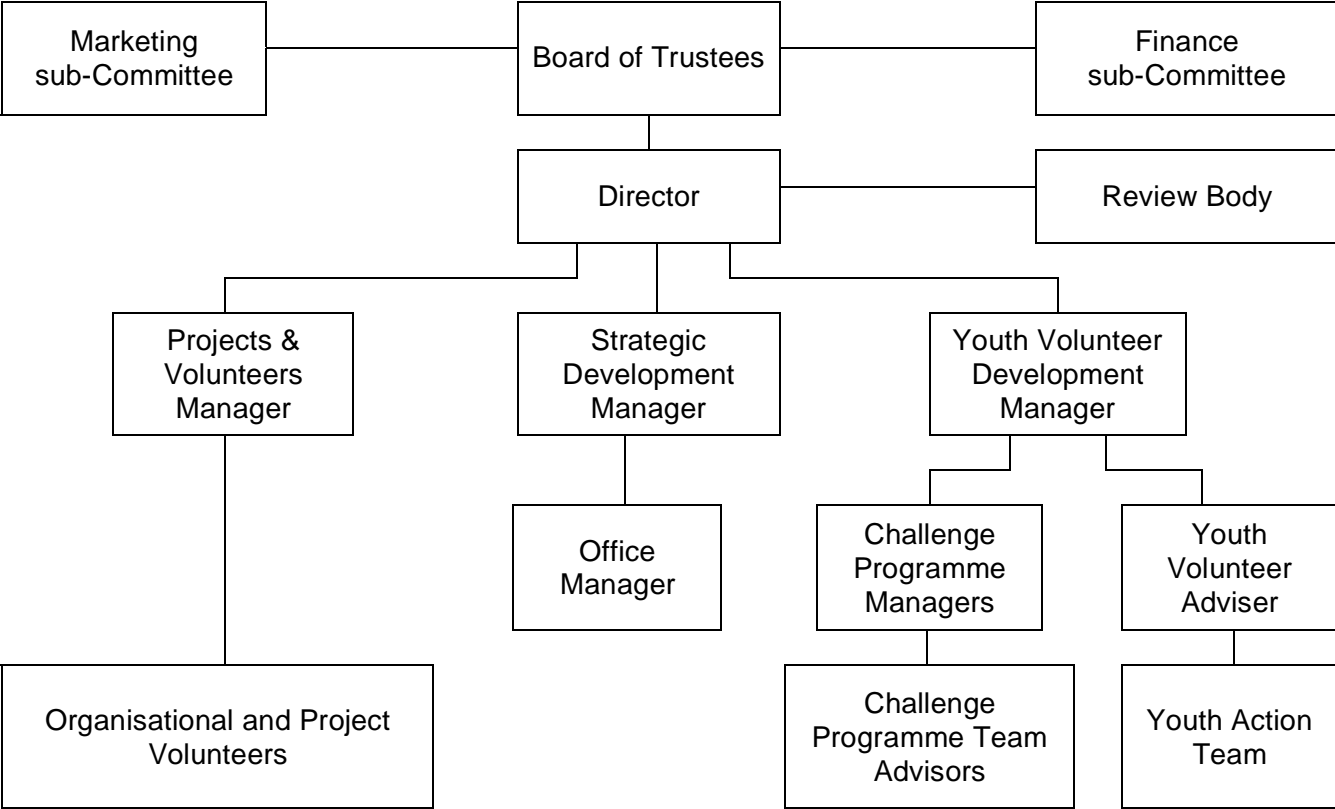
These values are supported by a belief that our lives are not pre-determined and that our destinies are in our own hands. The decisions we make will determine the direction our lives take. This is true for all people, but is especially important for young people making the transition to adulthood. These decisions are most often taken following key moments and events in our lives.

At FOCUS we believe that anyone with whom we come into contact can be provided with such a key moment in their life. We must always believe that we are about to be presented with an opportunity to 'switch on a light' and support someone in making an important life decision.

Therefore, if we carry out our duties with passion, hard work, creativity, risk-taking, quality, respect, and with young people at the centre of our work, we can have a significantly positive effect on the lives of those people. Conversely, if we do not carry out our duties in this way, we could potentially have a detrimental effect or simply miss a great opportunity.

3. Organisational Structure

During 2007 the following organisational structure was in place:



Currently, nine trustees govern FOCUS. They include four former FOCUS volunteers and one former programme participant, with a wide range of skills, backgrounds and experiences.

Two sub-Committees, a Finance sub-Committee and a Marketing sub-Committee support the Board of Trustees. These both comprise staff and trustees and are respectively responsible for monitoring FOCUS' financial position, and implementing systems for externally promoting FOCUS.

Approximately 200 trained volunteers, who take on both organisational and project roles, such as supporting the preparation of our programme materials or acting as project team members, additionally support the organisation. Not all of these volunteers were 'active' during 2007, as is detailed in Section 9 – The Value of Volunteering.

Throughout 2007 a Review Body, comprising former programme participants, volunteers, staff, and representatives from the Board of Trustees, met quarterly to represent the views of our key internal stakeholders. Whilst not a decision making body, this forum is influential in shaping our strategic development, reviewing our progress and prioritising areas for development.

The Review Body was chaired by FOCUS volunteer, Louisa Butt throughout the year.

4. Company Secretary and Principal Officer

Company Secretary:
James Maxwell-Scott

Director (Principal Officer):
Matt Lilley

5. Registered Company and Charity information

According to its Memorandum of Association, FOCUS' objects are:

- a) to provide or assist in the provision of facilities for recreation or other leisure time occupation in the interests of social welfare with the object of improving conditions of life for the persons for whom the facilities are primarily intended and who have need of such facilities by reason of their youth, age, infirmity or disability, poverty or social and economic circumstances; and
- b) to advance the education of children and disabled adults in particular through the organisation and management of team based projects in the local community.

In delivering these objects, during 2007 FOCUS specifically targeted its service provision at young people, aged 13 – 17, who are experiencing, or at risk of experiencing disadvantage; and young physically or learning disabled people, aged 13 – 25.

Registered Office:

c/o Peters, Elworthy and Moore, Salisbury House, Station Road, Cambridge, CB1 2LA

Administrative Office:

FOCUS, 73 Churchgate, Leicester, LE1 3AN

FOCUS is a company limited by guarantee, number: **3491993**.

FOCUS is a registered charity, number: **1068467**.

6. Trustees (Directors) and their interests

The following served as Trustees and Directors of the charitable company during 2007:

- Mark Bennett (Chair)
- Daniel Hyde (Hon. Treasurer – appointed May 2007)
- Lisa Egan
- Debra Coady (née Maguire)
- Jennifer Kabaaga (Hon. Treasurer - retired May 2007)
- James Maxwell-Scott (Secretary)
- Sally Edwards
- Martin Gilbraith
- Bryan Stevens (retiring April 2008)
- Thea Mills (appointed July 2007)

At no time during the period did any of the Trustees hold any interests in the Company.

7. Recruitment, Selection and Induction of New Trustees (Directors)

The recruitment and selection of new members of the Board of Trustees is the responsibility of the Board.

The selection process includes: Advertising positions as widely as possible in order to attract applicants from a range of backgrounds; Applicants are invited to submit their Curriculum Vitae, along with a supporting letter outlining their suitability for the role; Short-listed candidates are then invited to attend a Board meeting as an observer; Following this, the Trustees meet to discuss each applicant and those who are felt to fulfil their criteria are invited to join the Board, subject to appropriate checks and references (Note: checks include a search of the Register of Disqualified Company Directors, Enhanced Criminal Records Bureau check, and, for key positions, such as Hon. Treasurer, this also requires professional references).

Trustees' induction is carried out on an individually tailored basis, taking account of previous knowledge of the organisation and the specific role performed by each new trustee.

8. Statement of Trustees' Responsibilities

The Trustees are responsible for preparing the annual report and financial statements in accordance with applicable law and United Kingdom Generally Accepted Accounting Practice.

Company law requires the Trustees to prepare financial statements for each financial year which give a true and fair view of the state of affairs of the charity and the incoming resources and application of resources, including the net income or expenditure, of the charity for the year. In preparing those financial statements, the Trustees are required to:

- Select suitable accounting policies and then apply them consistently;
- Make judgements and estimates that are reasonable and prudent;
- State whether applicable accounting standards have been followed, subject to any material departures disclosed and explained in the financial statements; and
- Prepare the financial statements on the going concern basis unless it is inappropriate to presume that the charity will continue in operation.

The Trustees are responsible for keeping proper accounting records which disclose with reasonable accuracy at any time the financial position of the charity and which enable them to ensure that the financial statements comply with the Companies Act 1985. They are also responsible for safeguarding the assets of the charity and hence for taking reasonable steps for the prevention and detection of fraud and other irregularities.

The Trustees are responsible for the maintenance and integrity of the corporate and financial information included on the charity's website. Legislation in the United Kingdom governing the preparation and dissemination of financial statements may differ in other jurisdictions.

9. The Value of Volunteering

During 2007, FOCUS' volunteers provided 5,921 hours of support to the charity. This equates to an in-kind value of **£79,163.77** worth of volunteering. This figure is based upon an average national hourly rate of £13.37, as published in summer 2007 and used by Volunteering England. The financial value of volunteers' contributions to FOCUS during the year is the equivalent of 26% of our annual expenditure and demonstrates the huge importance of volunteering to the organisation.

It is expected that in future years we will see an increase in volunteering activity as our portfolio and new services become established and we are able to offer further volunteering opportunities to our existing and newly recruited body of volunteers. There are currently over 200 volunteers on our database, of whom 89 were actively involved in volunteering during 2007.

10. Fundraising Strategy and Performance

The main focus of our fundraising efforts during 2007 has been on securing funds for our central costs. This had the aim of enabling us to expand our small central staff team in order to provide the core services required by our growing project delivery staff team.

Throughout the year applications were developed and submitted to a range of sources, the majority of which were local and national trust funds, but also included some local and national government sources. We were particularly keen to develop our sources of unrestricted income in

order to grow our unrestricted reserves. This strategy has been highly successful, as we have seen our reserves increase four-fold across the year.

FOCUS has traditionally enjoyed a high level of success with its funding applications, with approximately 33% of applications generating a positive response each year. During 2007, a total of 25 bids were submitted, of which 28% were successful, with a further 24% currently awaiting an outcome. This continued success was achieved despite the departure of our Fundraising and Development Manager, who had been with the organisation for over 10 years.

Our fundraising strategy this year enabled us to double our income for the second year in succession and has ensured that we begin 2008 with a solid funding base.

Our main funders for 2007 were the Department for Children, Schools and Families (formerly the Department for Education and Skills); v, the new youth volunteering charity; the Big Lottery Fund - Young Peoples Fund; The Big Lottery Fund - Reaching Communities Fund; the LandAid Trust; and the Dulverton Trust.

Towards the end of 2007 we created a new 4 year Strategic Plan for FOCUS, which includes our plans for fundraising from 2008 – 2011.

11. Review of Activities

Building on the successes of the previous year, 2007 has been another busy year as we built our capacity to deliver the Challenge Programme in the East Midlands and launched our new youth volunteering programme, funded by v. We also continued to deliver our Inspire Residential projects and developed new projects under the banner of our Explore service.

Challenge Programme

The Challenge Programme works with young people aged 13-19 in disadvantaged inner city areas. Young people are supported by training FOCUS facilitators to run community projects for the benefit of others. As well as increasing their sense of community belonging, the programme also develops their self-esteem, confidence, team-working and interpersonal skills, and improves their image of volunteering.

In December 2006 we were delighted to be informed that the Big Lottery Fund had awarded us a Reaching Communities grant of £394,005 over three years to deliver Challenge in Nottingham and Leicester. As a result, the programme was bolstered by the appointment of two full-time Programme Managers, who have been out and about promoting and delivering the programme in the two cities. They have already made their mark, making links with new schools and adapting the programme to maximise its value to the recently revised schools' curriculum

The Summer Term was a busy one for our two new managers, as they supported young people from three inner city schools in Leicester and Nottingham, for example:

- A group of young people with severe or profound learning difficulties spent three days clearing ground and setting plants at a local primary school.
- A once overgrown piece of land at a community garden was transformed by a team of students from a nearby school.
- Young people worked together to tidy the grounds of a care centre, and spent time talking with the centre's elderly residents, gaining an insight into their lives and how their community has changed over the years.

“Excellent project that brings together organisations and volunteer groups to benefit each other and the community.”

Kat, Roots and Shoots Community Garden

Our Big Lottery Fund grant includes the cost of an external evaluation of the Challenge Programme, which will assess the outcomes of the projects. An evaluator has been appointed, and so this process has now started, with the work undertaken to date including a review of our existing monitoring and evaluation materials and processes and the development of an action plan for a longitudinal study of the impact of the programme.

The year mainly focused on building links with new schools and youth organisations, training our new Programme Managers, further developing our materials to ensure that they are appropriate for use with a wide range of young people, including learning disabled young people, and preparing for the launch of the new Citizenship curriculum in schools.

Ensuring that the programme continued to offer a valid and valuable service to young people remained a priority for us during the year. We were delighted in February to receive an endorsement of our work from the Qualifications and Curriculum Authority.

"What FOCUS provides through Challenge is exactly the sort of programme that we would like to see schools using to support both the Citizenship curriculum and the new Engagement Programme. The 'real-life' nature of FOCUS' programme brings Citizenship alive and captures the imagination of disengaged students."

Sandra Stalker, Strategic Manager, Qualifications & Curriculum Authority

As a result of the prioritising of programme development, we limited our delivery of the programme to just three school groups, catering for a total of 40 young people.

The evaluation that we carried out with these young people revealed that:

- 76% of young people were able to give examples of skills they had developed with regard to teamworking
- 82% set a goal for a skill they wished to develop, of which 96% reported that they had developed in that skill area
- 64% reported that they had developed their communication skills
- 71% successfully undertook a difficult task in an area that was new to them
- 71% were able to give a specific example of how they could use their new skills in the future
- 86% felt more confident about running their own project in future

Plans are in place to offer the Challenge Programme, along with a residential event and follow-on workshops, to a group of homeless young people in partnership with the Karibu Foyer in Nottingham. This project has been made possible by the award of a grant from the LandAid Trust.

Inspire

In August, 56 young people attended our Inspire Residential project, which was supported by the Big Lottery Fund's Young People's Fund. This year's project was our biggest ever single residential event of this type.

Through Inspire, we aim to enable young people 'at risk' and disabled young people to work together as part of a small diverse team, to try different activities, and to take on new roles and responsibilities. The young people involved receive support and encouragement from trained staff and volunteers. This year 35 volunteers took part.

Unfortunately, we took the decision to end the project a day earlier than was originally planned due to some particularly challenging behavioural issues that were encountered on the residential. These issues posed a potential risk to the health and safety of all those taking part; young people, staff and volunteers, and the decision to end the project was taken to ensure their welfare. Despite this, feedback received from the young people attending the project and their referrers and parents/carers has been largely positive.

"This seems like an excellent project which my young person thoroughly enjoyed! Lots of conversation from it. Thanks for providing a great opportunity."

Referrer, Leicester

"Through attending the project, Sara has a good understanding of how group dynamics can impact on how participants experience group activities ... Listening to Sara's experiences I believe that participating in the FOCUS projects has enabled Sara to develop team working skills, an understanding of other peoples needs and a sense of 'fair play'."*

Parent, Leicester

*Name changed to protect identity

"Although this project had problems, James still benefited from it. He enjoyed the activities a lot. James has got a lot out of his involvement with FOCUS it boosts his self-confidence and gives him the opportunity to meet new people, which is great for James as he can sometimes find it difficult. I would like to thank FOCUS a lot for this."*

Parent, Leicester

*Name changed to protect identity

"It is an amazing experience, the volunteers are fun, the activities are wicked and the effects are noticeable."

Young person, Leicester

The funding of this project by the Big Lottery Fund – Young People's Fund has enabled us to commence a comprehensive and independent external evaluation of Inspire. The evaluation will assess the impact of the project on the lives of young people taking part. In addition, following some of the issues we faced on this year's Inspire Residential we are undertaking an internal review with the support of our Review Body and the volunteers who took part.

From the evaluation forms that the young people completed, we found that:

- 71% reported an increase in their the level of self-confidence and self-belief
- 86% felt that they had become more motivated and enthusiastic
- 100% identified skills that they had developed in team-working
- 71% had developed leadership skills
- 86% reported that they were better able to remain calm and in control of their emotions

Explore

24 young people from last year's Inspire Residential project continued their direct involvement with FOCUS through our Explore programme.

Funded by the Lloyds TSB Foundation, our Explore Workshops are for those young people who have attended our Inspire Residential project who have been identified as needing additional support. The workshops cover a range of issues affecting young people, providing them with information in a safe, enjoyable environment.

- 'Life's not Fair' – focussing on managing relationships with people in authority.
- 'Is There Anybody Out There?' – an information, advice and guidance workshop providing contact details and information about key organisations working to support young people in Leicester and Leicestershire.
- 'It's Getting Hot in Here' – a safe and fun workshop addressing issues surrounding sex and relationships.
- 'What are you Like?' – identifying the skills and attributes required to successfully manage and control our emotions.

These four one-day workshops took place during the school half-term holiday in June as a residential project.

"I think we should talk more about the [sexually transmitted] diseases and what happens if you don't get checked out straight away and how important it is."

Young person talking about 'It's Getting Hot in Here'

Our first ever Explore Residential project, funded by Awards for All, took place in April this year. The aim of the project was to develop young people's leadership skills.

The young people, aged 13-17, were split into three teams and challenged to make the world a better place. Inspired by Ghandi's words, "Be the change you want to see in the world", one team created leaflets filled with different ideas about the little things that people can do to make the world a better place. They set out to spread the word, by distributing their leaflets and challenging people on the street to join in their campaign. They were really pleased when a tourist information office put one of the leaflets up in their window.

"This trip was awesome! Thank you FOCUS. I hope your future trips go well and if you ever want me to come I'll love to come! And thank you once more for inviting me to come here, I learnt a lot of new things!"

Young person's comment following Explore Residential

vteam

Supported by v, the youth volunteering charity, our two full-time vteam members came into post in February 2007. They have made a big impact; both internally, focusing on improving the experience that our young volunteers have with us; and externally, promoting the benefits of youth volunteering to young people aged 16-25 and other organisations.

Young volunteers themselves are involved in running this project through our recently recruited Youth Action Team (YAT). Members of YAT provide positive peer influence, encouraging young people from across Leicester to participate in a range of volunteering activities, as well as supporting the development and delivery of activities and materials to promote youth volunteering to organisations and the wider community in Leicester City.

We have also recruited eight young people to the vteam's Youth Action Funding Team, who will assess small grant applications (up to £250) and give out funding to other young people to enable them to develop youth-led projects in their communities.

"I think community youth projects are a really important part of individual development as well as bettering a particular area or community."

Member of the Youth Action Funding Team

Working with other voluntary sector organisations in the city the vteam created 225 new volunteering opportunities for young volunteers in Leicester and involved 179 young volunteers in this, their first year of operation.

A key achievement for FOCUS is that a number of the young volunteers involved with both the Youth Action Team and the Youth Action Funding Team have previously been participants in FOCUS' Inspire and Explore residential projects.

Through the success of our this pilot year, FOCUS was invited to take on a new 3 year contract to host a vteam (which will be known as a vinvolved team from 2008)

Other Activities

In order to maintain a consistent level of communication with our key stakeholders, during the latter part of the year we combined our two existing newsletters into one. *In FOCUS* will now be produced and distributed to both our internal and external contacts bi-annually, with e-mail correspondence additionally provided more regularly to our volunteers.

A thorough review of our website was undertaken during the year and a new format developed, which will be launched in 2008. This will allow for a greater level of content control and more regular updates to be made.

By popular demand, a Facebook group was created for FOCUS volunteers to maintain contact with one another and to disseminate information about upcoming projects and events. By the end of the year the group had 118 members.

Our Review Body has continued to meet on a quarterly basis, acting as a forum that brings together our Trustees, staff and volunteers (including former programme participants) to discuss FOCUS' future and to jointly help develop our programmes. At their December meeting Louisa Butt, chair for the past two years, stood down. Fergal Jones was elected as her replacement.

In September, following consultation with the staff team, we created and adopted an Environmental Policy. This requires us to commit to reducing waste generated through our activities, increasing the amount of material that is recycled and seeking to purchase Fairtrade or ethically produced items wherever possible.

12. Future Plans and Strategy

During 2007 we began creating a new Strategic Plan for FOCUS for the years 2008 – 2011. This process involved consultation with our staff team, Board of Trustees and Review Body members. We undertook a comprehensive SWOT (Strengths, Weaknesses, Opportunities and Threats) Analysis and set the following objectives as a result:

- We will focus our efforts on providing a high quality and more comprehensive service for young people in the East Midlands, with a particular emphasis on Nottingham and Leicester and their respective surrounding counties. As such we will identify ourselves as a regional, rather than local or national organisation.
- The delivery of our services will continue to be driven by our vision of *“a society in which individuals feel inspiring and empowered to have a positive impact in their communities”*. By this we mean that we will strive, through our own efforts and by influencing others, to create a society in which people feel that they can make a contribution; that they have a place and a role in society and they have been armed with the skills, knowledge and resources to fulfil their responsibilities. Moreover, we aim to provide the inspiration and impetus to make that happen.
- Specifically, our **Challenge Programme** will provide the resources required for at least **4,500** young people in the East Midlands to plan and carry out projects that will directly benefit their local community; our **involved team** will create in excess of **3,600** new volunteering opportunities, support at least **650** young volunteers in accessing them and engage with over **160** organisations, to improve the quality of volunteering in Leicester; and our **Inspire** and **Explore** programmes will provide a unique and powerful personal development experience to over **250** young people from the East Midlands.
- We will place a greater emphasis on the involvement of young people in all key areas of activity of our organisation and will implement an appropriate self-assessment system, such as *Hear by Right*, to identify actions required and to monitor our progress and performance in placing the needs, interests and aspirations of young people at the heart of everything we do.
- In order to achieve our goals, we will continue to invest significant resources into the training, management and support of our staff and volunteers and we will strive to create a 'happy' environment in which they can work.
- Over the next 4 years, we will establish FOCUS as a leading organisation in the field of youth development and youth volunteering in the East Midlands. By this we mean that we will strive

to become an exemplar organisation, providing high quality services that complement provision by other agencies and organisations and we will seek to pro-actively and positively influence the provision of services in the area.

13. Risk Assessment

The staff and trustees of FOCUS have given consideration to the major risks to which FOCUS may be exposed and have produced a detailed risk assessment and management plan covering all of our activities. During 2007, our Risk Policy and Risk Register, covering issues of organisational governance were regularly reviewed by the Board of Trustees at their quarterly meetings, and revised as necessary.

14. Reserves

On 1 January 2007, FOCUS held an unrestricted reserve of £10,224, equivalent to one month's unrestricted expenditure. The Trustees carefully monitored the position throughout 2007, taking appropriate advice where necessary. They continue to seek new sources of unrestricted income to boost the Company's free reserves to an appropriate level. This is so as to provide sufficient funds to cover governance and support costs and to be able to respond to unexpected events in the short term without disruption to the Company's activities. On 31 December 2007, unrestricted reserves stood at £38,506, which represents an almost four-fold increase on the previous year and is equivalent to over 3 months' unrestricted expenditure. The Trustees believe that, in the long term, a free reserves level equivalent to 6 months' unrestricted expenditure is an appropriate target and we will strive to achieve and maintain that during 2008

15. Auditors and Principal Bankers

Our Auditors in 2007 were:

Peters, Elworthy and Moore
Salisbury House
Station Road
Cambridge
CB1 2LA

Our Principal Bankers in 2007 were:

CAF Bank Ltd
Kings Hill Avenue
Kings Hill
West Malling
Kent
ME19 4JQ

Signed on Behalf of FOCUS:



Mark Bennett, Chair of Trustees

Date: 3 June 2008



Daniel Hyde, Hon. Treasurer

Date: 3/6/08.

FOCUS CHARITY
(A company limited by guarantee)

INDEPENDENT AUDITORS' REPORT TO THE MEMBERS OF FOCUS CHARITY

We have audited the financial statements of FOCUS Charity for the year ended 31 December 2007 which comprise the Statement of financial activities and Balance sheet, with the related notes. These financial statements have been prepared in accordance with the accounting policies set out therein.

This report is made solely to the charitable Company's members, as a body, in accordance with Section 235 of the Companies Act 1985. Our audit work has been undertaken so that we might state to the charitable Company's members those matters we are required to state to them in an Auditors' report and for no other purpose. To the fullest extent permitted by law, we do not accept or assume responsibility to anyone other than the charitable Company and its members, as a body, for our audit work, for this report, or for the opinion we have formed.

RESPECTIVE RESPONSIBILITIES OF TRUSTEES AND AUDITORS

The responsibilities of the Trustees (who also act as company directors of Focus Charity for the purposes of company law) for preparing the Trustees' annual report and the financial statements in accordance with applicable law and United Kingdom Accounting Standards (United Kingdom Generally Accepted Accounting Practice) are set out in the Statement of Trustees' responsibilities.

Our responsibility is to audit the financial statements in accordance with relevant legal and regulatory requirements and International Standards on Auditing (UK and Ireland).

We report to you our opinion as to whether the financial statements give a true and fair view and are properly prepared in accordance with the Companies Act 1985. We also report to you whether the information given in the Trustees' annual report is consistent with the financial statements.

In addition we report to you if, in our opinion, the Company has not kept proper accounting records, if we have not received all the information and explanations we require for our audit, or if information specified by law regarding Trustees' remuneration and transactions with the Company is not disclosed.

We read the Trustees' annual report and consider the implications for our report if we become aware of any apparent misstatements within it.

BASIS OF AUDIT OPINION

We conducted our audit in accordance with International Standards on Auditing (UK and Ireland) issued by the Auditing Practices Board. An audit includes examination, on a test basis, of evidence relevant to the amounts and disclosures in the financial statements. It also includes an assessment of the significant estimates and judgments made by the Trustees in the preparation of the financial statements and of whether the accounting policies are appropriate to the charitable Company's circumstances, consistently applied and adequately disclosed.

We planned and performed our audit so as to obtain all the information and explanations which we considered necessary in order to provide us with sufficient evidence to give reasonable assurance that the financial statements are free from material misstatement, whether caused by fraud or other irregularity or error. In forming our opinion we also evaluated the overall adequacy of the presentation of information in the financial statements.

We have undertaken the audit in accordance with the requirements of APB Ethical Standards including APB Ethical Standards - Provisions Available for Small Entities, in the following circumstances:

- In common with many other businesses of this size and nature, the Company uses our firm to assist with the preparation of the financial statements.

FOCUS CHARITY
(A company limited by guarantee)

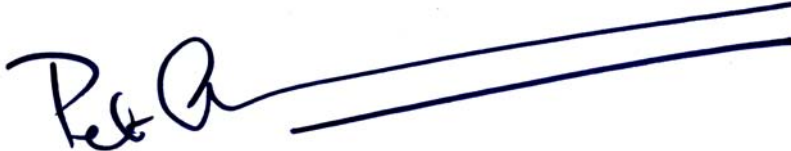
INDEPENDENT AUDITORS' REPORT TO THE MEMBERS OF FOCUS CHARITY

OPINION

In our opinion:
the financial statements give a true and fair view, in accordance with United Kingdom Generally Accepted Accounting Practice applicable to Smaller Entities, of the state of the charitable Company's affairs as at 31 December 2007 and of its Incoming resources and application of resources, including its income and expenditure for the year then ended;

the financial statements have been properly prepared in accordance with the Companies Act 1985; and

the information given in the Trustees' annual report is consistent with the financial statements.

A handwritten signature in dark blue ink, appearing to read 'Peter Elworthy', is written over two parallel horizontal lines.

PETERS ELWORTHY & MOORE

Chartered Accountants
Registered Auditors

Cambridge

1 July 2008

FOCUS CHARITY
(A company limited by guarantee)

STATEMENT OF FINANCIAL ACTIVITIES
(incorporating income and expenditure account)
FOR THE YEAR ENDED 31 DECEMBER 2007

	Note	Restricted Special projects Fund 2007 £	Unrestricted Funds 2007 £	Total Funds 2007 £	Total Funds 2006 £
INCOMING RESOURCES					
Incoming resources from generated funds:					
Voluntary income	2	318,348	20,527	338,875	138,916
Activities for generating funds		-	-	-	70
Investment income		-	6,111	6,111	1,249
Incoming resources from charitable activities	2	76,414	1,600	78,014	99,733
Other incoming resources		-	44	44	77
TOTAL INCOMING RESOURCES		394,762	28,282	423,044	240,045
RESOURCES EXPENDED					
Cost of generating funds:					
Costs of generating voluntary income		20,501	-	20,501	22,067
Charitable activities	6	234,091	-	235,091	153,674
Governance costs	8	41,099	-	41,099	25,226
TOTAL RESOURCES EXPENDED	8	296,691	-	296,691	200,967
MOVEMENT IN TOTAL FUNDS FOR THE YEAR – NET INCOME FOR THE YEAR					
		98,071	28,282	126,353	39,078
Total funds at 1 January 2007		41,361	10,224	51,585	12,507
TOTAL FUNDS AT 31 DECEMBER 2007		139,432	38,506	177,938	51,585

The Statement of Financial Activities includes all gains and losses recognised in the Year.

The notes on pages 19 to 25 form part of these financial statements.

FOCUS CHARITY
(A company limited by guarantee)

BALANCE SHEET
AS AT 31 DECEMBER 2007

		2007		2006
	Note	£	£	£
FIXED ASSETS				
Tangible fixed assets	9	8,396		5,546
CURRENT ASSETS				
Debtors	10	7,950		5,080
Cash at bank		174,309		60,801
		182,259		65,881
CREDITORS: amounts falling due within one year	11	(12,717)		(19,842)
NET CURRENT ASSETS		169,542		46,039
TOTAL ASSETS LESS CURRENT LIABILITIES		177,938		51,585
CHARITY FUNDS				
Restricted special projects fund	12	139,432		41,361
Unrestricted funds	12	38,506		10,224
		177,938		51,585

The financial statements have been prepared in accordance with the special provisions of Part VII of the Companies Act 1985 relating to small companies and in accordance with the Financial Reporting Standard for Smaller Entities (effective January 2007)

 3 June 2008

Mark Bennett, Chair



Mr D Hyde, Treasurer

The notes on pages 20 to 24 form part of these financial statements.

FOCUS CHARITY
(A company limited by guarantee)

NOTES TO THE FINANCIAL STATEMENTS
FOR THE YEAR ENDED 31 DECEMBER 2007

1. ACCOUNTING POLICIES

1.1 BASIS OF PREPARATION OF FINANCIAL STATEMENTS

The financial statements have been prepared under the historical cost convention and in accordance with the Financial Reporting Standard for Smaller Entities (effective January 2007), the Companies Act 1985 and follow the recommendations in Accounting and Reporting by Charities: Statement of Recommended Practice 2005.

1.2 COMPANY STATUS

The Company is a company limited by guarantee, not having a share capital, and a registered charity, therefore entitled to the exemption from tax afforded by section 505 (1) ICTA 1988.

1.3 FUND ACCOUNTING

General funds are unrestricted funds which are available for use at the discretion of the Trustees in furtherance of the general objectives of the Company and which have not been designated for other purposes.

Restricted funds are funds which are to be used in accordance with specific restrictions imposed by donors which have been raised by the Company for particular purposes. The cost of raising and administering such funds are charged against the specific fund. The aim and use of each restricted fund is set out in the notes to the financial statements.

Investment income, gains and losses are allocated to the appropriate fund.

1.4 INCOMING RESOURCES

All incoming resources are included in the Statement of Financial Activities when the Company is legally entitled to the income and the amount can be quantified with reasonable accuracy. Capital grants received in respect of Fixed assets are treated as restricted income and are reduced annually by depreciation of the relevant assets.

Gifts in kind donated for distribution are included at valuation and recognised as income when they are distributed to the projects. Gifts donated for resale are included as income when they are sold. Donated facilities are included at the value to the Company where this can be quantified and a third party is bearing the cost. No amounts are included in the financial statements for services donated by volunteers.

The value of services provided by volunteers has not been included within the Statement of Financial Activities, but has been valued and is disclosed in section 9 of the Trustees Report.

Grants that relate to the specific performance of a service are treated as Incoming Resources from charitable activities.

Income tax recoverable in relation to donations received under Gift Aid or deeds of covenant is recognised at the time of the donation.

FOCUS CHARITY
(A company limited by guarantee)

NOTES TO THE FINANCIAL STATEMENTS
FOR THE YEAR ENDED 31 DECEMBER 2007

1. ACCOUNTING POLICIES (continued)

1.5 RESOURCES EXPENDED

All expenditure is accounted for on an accruals basis and are allocated to a particular activity where the cost is directly attributable. Total staff costs are shown separately under note 4 and are further broken down according to expenditure categories based on an estimate of staff time and resources employed in relation to each programme and area of activity.

Support costs are those costs incurred directly in support of expenditure on the objects of the Company. Governance costs are those incurred in connection with administration of the Company and compliance with constitutional and statutory requirements.

1.6 CASH FLOW STATEMENT

The financial statements do not include a Cash flow statement because the charitable Company, as a small reporting entity, is exempt from the requirement to prepare such a statement under the Financial Reporting Standard for Smaller Entities (effective January 2007).

1.7 CAPITAL EXPENDITURE

Small items of office equipment and activity apparatus are written off to the Income and Expenditure Account as incurred. Other capital purchases costing more than £250 are capitalised and depreciation is provided to write off the cost of tangible fixed assets over their estimated useful lives by equal annual instalments at the following rates:

Computers and equipment - 33.3% straight line

Donated assets are capitalised at a value equivalent to market value at the date of donation.

FOCUS CHARITY
(A company limited by guarantee)

**NOTES TO THE FINANCIAL STATEMENTS
FOR THE YEAR ENDED 31 DECEMBER 2007**

2. GRANTS/DONATIONS

Grants/Donations include the following amounts over £1,000:

	2007	2006
	£	
		£
Incoming resources from charitable activities		
Department for Education and Skills – NVYO grant scheme	76,14	77,227
Inspire Residential Fees	1,030	-
Other charitable activities less than £1,000	570	-
	78,014	77,227
Voluntary income		
Big Lottery – Heritage (Young Roots)	-	20,880
Big Lottery – Young People’s Fund	49,133	49,868
Big Lottery – Reaching Communities	135,343	-
v – Youth Volunteering Scheme	82,883	25,295
v – Short-term opportunities	6,558	6,984
Russell Commission	-	10,891
Lloyds TSB	-	5,929
Awards for All	-	9,894
Leicester Youth Opportunities Fund	-	6,135
Dulverton Trust	20,400	-
Joanies Trust	1,128	-
LandAid Trust	20,253	-
Corah Foundation	1,000	-
Garfield Weston Foundation	15,000	-
Churchill Office Solutions Ltd	2,000	-
Other Grants/Donations less than £1,000	5,177	2,940
	338,875	138,816
Total voluntary income		
	416,889	216,043
Total		

FOCUS CHARITY
(A company limited by guarantee)

**NOTES TO THE FINANCIAL STATEMENTS
FOR THE YEAR ENDED 31 DECEMBER 2007**

3. NET INCOME

This is stated after charging:

	2007	2006
	£	£
Depreciation of tangible fixed assets:		
- owned by the charity	6,969	4,341
Auditors in respect of audit services	1,800	1,650
	8,769	6,041

During the Year, no Trustees received any remuneration (2006 - £NIL)

During the Year, no Trustees received any benefits in kind (2006 - £NIL)

4. STAFF COSTS

Staff costs were as follows:

	2007	2006
	£	£
Wages and salaries	162,864	92,605
Social security costs	15,611	8,879
	178,475	101,484

The average monthly number of employees during the year was as follows:

	2007	2006
	No.	No.
	8	4

No employee received remuneration amounting to more than £60,000 in either year.

The numbers do not include Trustees who are not permitted to receive remuneration for their duties. No Trustee received any remuneration during the year. 5 Trustees received reimbursement of expenditure amounting to £757 (2006: 4 Trustees £942)

5. EXPENDITURE BY CHARITABLE ACTIVITY

SUMMARY BY FUND TYPE

	Restricted Special project Fund	Unrestricted Funds	Total Funds	Total Funds
	2007	2007	2007	2006
	£	£	£	£
Activities Undertaken	235,091	-	235,091	153,674
	235,091	-	235,091	153,674

FOCUS CHARITY
(A company limited by guarantee)

**NOTES TO THE FINANCIAL STATEMENTS
FOR THE YEAR ENDED 31 DECEMBER 2007**

6. ANALYSIS OF RESOURCES EXPENDED BY ACTIVITIES

	Activities Undertaken directly 2007 £	Support costs 2007 £	Total 2007 £	Total 2006 £
Activities Undertaken	144,108	90,983	235,091	153,674

7. SUPPORT COSTS

	Activities Undertaken £	Total 2007 £	Total 2006 £
Staff Costs	6,614	6,614	4,113
Administration	11,126	11,126	3,186
Challenge Programme Preparation and Delivery costs	198	198	250
Explore Residential	7	7	-
Youth Volunteering Team	1,053	1,053	-
Bank Charges	34	34	108
Depreciation	6,969	6,969	4,341
Wages and salaries	59,201	59,201	24,025
National Insurance	5,781	5,781	2,431
	90,983	90,983	38,454

8. ANALYSIS OF RESOURCES EXPENDED BY EXPENDITURE TYPE

	Staff costs 2007 £	Other costs 2007 £	Total 2007 £	Total 2006 £
Costs of generating voluntary income	18,403	2,098	20,501	22,067
Activities Undertaken	133,030	102,061	235,091	153,674
Governance	27,042	14,057	41,099	25,226
	178,475	118,216	296,691	200,967

FOCUS CHARITY
(A company limited by guarantee)

**NOTES TO THE FINANCIAL STATEMENTS
FOR THE YEAR ENDED 31 DECEMBER 2007**

9. TANGIBLE FIXED ASSETS

	Furniture, fittings and equipment £
COST	
At 1 January 2007	64,518
Additions	9,819
At 31 December 2007	74,337
DEPRECIATION	
At 1 January 2007	58,972
Charge for the Year	6,969
At 31 December 2007	65,941
NET BOOK VALUE	
At 31 December 2007	8,396
At 31 December 2006	5,546

10. DEBTORS

	2007	2006
	£	£
Other debtors and prepayments	6,100	5,080
Prepayments and accrued income	1,850	-
	7,950	5,080

**11. CREDITORS:
AMOUNTS FALLING DUE WITHIN ONE YEAR**

	2007	2006
	£	£
Social security and other taxes	3,567	8,580
Other creditors and accruals	5,146	11,262
Accruals and deferred income	4,004	-
	12,717	19,842

FOCUS CHARITY
(A company limited by guarantee)

**NOTES TO THE FINANCIAL STATEMENTS
FOR THE YEAR ENDED 31 DECEMBER 2007**

12. SUMMARY OF FUNDS

	Brought Forward £	Incoming resources £	Resources Expended £	Carried Forward £
General funds	10,224	28,282	-	38,506
Restricted funds	41,361	394,762	(269,691)	139,432
	<u>51,585</u>	<u>423,044</u>	<u>(269,691)</u>	<u>177,938</u>

13. ANALYSIS OF NET ASSETS BETWEEN FUNDS

	Restricted Special projects Fund 2007 £	Unrestricted Funds 2007 £	Total Funds 2007 £	Total Funds 2006 £
Tangible fixed assets	4,723	3,673	8,396	5,546
Current assets	147,426	34,833	182,259	65,881
Creditors due within one year	(12,717)	-	(12,717)	(19,842)
	<u>139,432</u>	<u>38,506</u>	<u>177,938</u>	<u>51,585</u>

14. OPERATING LEASE COMMENTS

At 31 December 2007 the company had annual commitments under non-cancellable operating leases as follows:

	Land and buildings 2007 £	2006 £
EXPIRY DATE: Between 2 and 5 years	<u>9,000</u>	<u>8,083</u>

15. RELATED PARTY TRANSACTIONS

There were no related parties or related party transactions during the year to 31 December 2007.

16. APB ETHICAL STANDARDS

In common with many other businesses our size and nature we use our auditors to assist with the preparation of the financial statements.